



1750

Protector

Long Case

Sensitive equipment needs protection, and since 1976 the answer has been the Pelican™ Protector Case. These cases are designed rugged, and travel the harshest environments on earth. Against the extreme cold of the arctic or the heat of battle, Pelican cases have survived. Made in the USA, these tough cases are designed with an automatic purge valve, that equalizes air pressure, a watertight silicone O-ring lid, over-molded rubber handles and stainless steel hardware.

- **Strong polyurethane wheels with stainless steel bearings**
- **Watertight, crushproof, and dustproof**
- 3-piece foam set
- Automatic pressure equalization valve - balances interior pressure, keeps water out
- Easy open double-throw latches
- O-ring seal
- Open cell core with solid wall design - strong, light weight
- Stainless steel hardware and padlock protectors
- 12 lid bosses for mounting of multiple 1500MP EZ-Click™ MOLLE Panels
- Fold-down side handles on both ends additional carrying options
- New fold-down over-molded top and side handles
- *1500 EZ-Click™ MOLLE Panels sold separately. Now available for purchase



CONFIGURATIONS



1750
Standard

1750WF
With Foam

1750NF
No Foam

DIMENSIONS

Interior (LxWxD)	50.38 x 13.33" x 5.33 (128 x 33.9 x 13.5 cm)
Exterior (LxWxD)	53.60 x 16.05" x 6.13 (136.1 x 40.8 x 15.6 cm)
Int Volume	2.07 ft ³ (0.059 m ³)
Padlock Hole Diameter	0.31" (0.8 cm)

MATERIALS

Body	Polypropylene
Latch	ABS
O-Ring	Polymer
Pins	Stainless Steel
Foam	1.3 lb Polyurethane
Purge Body	ABS

Purge Vent

3 Micron Hydrophobic Non-Woven

COLORS

■ Black

■ Desert Tan

■ OD Green

WEIGHT

Weight With Foam 26.70 lbs (12.1 kg)

Weight Empty 21.00 lbs (9.5 kg)

TEMPERATURE

Minimum Temperature -40°F (-40 °C)

Maximum Temperature 210°F (98.9 °C)

OTHER

Nameplate yes

ACCESSORIES



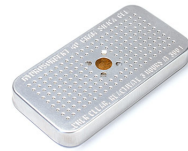
1500MP
EZ-Click™ MOLLE Panel



1500CI
Corrosion Intercept Kit



1506TSA
TSA Lock



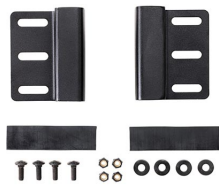
1500D
Desiccant Silica Gel



1753
Replacement O-ring



1751FS
3 pc. Replacement Foam Set



LGMT-001P
Protector Case Roof Mount

Pelican

23215 Early Ave • Torrance, CA 90505 USA • Phone: (310) 326-4700 • (800) 473-5422 • Fax: (310) 326-3311
sales@pelican.com • www.pelican.com

Document created on 12-21-24