



# 1626

## Air

Peli understands that finding the right protection, with the perfect fit for your gear, is a priority. Peli™ Air began with long protection and quickly grew to offer you deep protection. The time has come to combine those two in order to create Peli's new Long/Deep Series. Gone are the days of dangerously forcing your equipment into the wrong size case or leaving it unprotected with no other options. With Peli's Long/Deep series, we've created the missing link so that no matter the demands of your gear, Peli has you covered.

- Automatic pressure equalization valve - balances interior pressure, keeps water out
- Fold down over-molded handle
- Retractable extension trolley handle
- Stainless steel padlock protectors
- Business card holder
- Quiet rolling stainless-steel bearing wheels
- Press and Pull™ Latches
- Super-light proprietary HPX2™ Polymer - up to 40% lighter
- Waterproof O-ring seal
- User-customizable Pick N Pluck™ foam
- Waterproof, crushproof, dustproof
- IP67 & MIL-SPEC certified
- Limited Lifetime Warranty (Where applicable by law)



### CONFIGURATIONS



**1626**  
Standard



**1626WF**  
With Foam



**1626NF**  
No Foam



**1626WD**  
With Padded Dividers

### DIMENSIONS

|                              |  |
|------------------------------|--|
| <b>Interior (LxWxD)</b>      | 28.14 x 14.10" x 11.72 (71.5 x 35.8 x 29.8 cm) |
| <b>Exterior (LxWxD)</b>      | 31.12 x 17.05" x 13.33 (79 x 43.3 x 33.9 cm)   |
| <b>Lid Depth</b>             | 2.00" (5.1 cm)                                 |
| <b>Bottom Depth</b>          | 9.72" (24.7 cm)                                |
| <b>Total Depth</b>           | 11.72" (29.8 cm)                               |
| <b>Int Volume</b>            | 2.69 ft <sup>3</sup> (0.076 m <sup>3</sup> )   |
| <b>Padlock Hole Diameter</b> | 0.31" (0.8 cm)                                 |

### MATERIALS

|               |                                 |
|---------------|---------------------------------|
| <b>Body</b>   | Proprietary Polypropylene Blend |
| <b>Latch</b>  | ABS                             |
| <b>O-Ring</b> | EPDM                            |

**Purge Body** ABS  
**Purge Vent** Hi-Flow Gore-Tex 3 Micron Hydrophobic Non-Woven

## COLOURS

---

■ Black

## WEIGHT

---

**Weight With Foam** 18.10 lbs (8.2 kg)  
**Weight Empty** 14.65 lbs (6.6 kg)  
**Buoyancy** 185.32 lbs (84.1 kg)

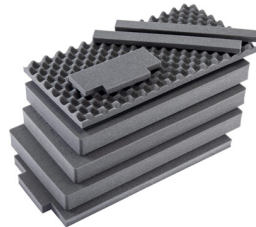
## TEMPERATURE

---

**Minimum Temperature** -60°F (-51.1 °C)  
**Maximum Temperature** 160°F (71.1 °C)

## ACCESSORIES

---



**1626AirFS**  
8 pc. Replacement Foam Set

---

### Peli

c/ Provença, 388, Planta 7 • Barcelona, Spain 08025 • Phone: +34 934 674 999  
[info@peli.com](mailto:info@peli.com) • [www.peli.com](http://www.peli.com)

*Document created on 07-17-24*