



iM2400

Storm

Laptop Case

The Pelican™ Storm Case™ has the same legendary DNA as our Pelican Protector Case, with one primary difference: A unique Press and Pull latch that locks automatically, but open with a light touch.

Guaranteed for life, the Pelican Storm case is made in the USA and engineered using the finest components.

- Guaranteed for life
- **Watertight, crushproof, and dustproof**
- Two Press & Pull Latches
- Two Padlockable Hasps
- Double-layered, Soft-grip Handle
- Vortex™ Valve
- Powerful Hinges
- Lightweight Strong HPX® Resin



CONFIGURATIONS



iM2400
Standard



iM2400-X0000
No Foam



iM2400-X0002
With Padded Dividers



iM2400-X0001
With Foam

DIMENSIONS

Interior (LxWxD)	18.00 x 13.00" x 6.70 (45.7 x 33 x 17 cm)
Exterior (LxWxD)	19.20 x 15.20" x 7.30 (48.8 x 38.6 x 18.5 cm)
Lid Depth	2.00" (5.1 cm)
Bottom Depth	4.70" (11.9 cm)
Total Depth	6.7" (17 cm)
Int Volume	0.91 ft ³ (0.026 m ³)
Padlock Hole Diameter	0.38" (1 cm)

MATERIALS

Body	Injection Molded HPX™ high performance resin
Latch	Valox - Polybutylene Terephthalate (PBT)
Latch (Alt)	Xenoy - Polyester/Polycarbonate blend
O-Ring	EPDM
Pins	Stainless Steel
Pins (Alt)	Aluminum
Foam	1.3/1.35 polyester
Purge Body	Valox - Polybutylene Terephthalate (PBT)
Purge Body (Alt)	Xenoy - Polyester/Polycarbonate blend

Purge Vent

Gortex membrane

COLOURS

 Black

 OD Green

 Yellow

WEIGHT

Weight With Foam	7.80 lbs (3.5 kg)
Weight Empty	6.50 lbs (2.9 kg)
Buoyancy	59.02 lbs (26.8 kg)
Master Pack Weight	28.30 lbs (12.8 kg)

TEMPERATURE

Minimum Temperature	-20°F (-28.9 °C)
Maximum Temperature	140°F (60 °C)

CERTIFICATIONS

IP67

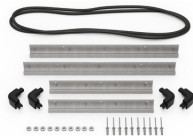
OTHER

Master Pack	3
Military	yes

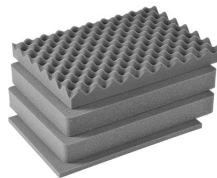
ACCESSORIES



iM2400-BEZEL-LID
Lid Bezel Kit



iM2400-BEZEL
Base Bezel Kit



iM2400-FOAM
4 pc. Replacement Foam Set



iM-VALVE-M-B
Manual Purge Valve



iM-STRAP-S-VER2
Padded Shoulder Strap



iM-LIDSTAY
Lid Stay



iM2400TPKIT
TrekPak Case Divider Kit



1506TSA
TSA Lock



1500D
Desiccant Silica Gel



1500CI
Corrosion Intercept Kit

Pelican

23215 Early Ave • Torrance, CA 90505 USA • Phone: (310) 326-4700 • (800) 473-5422 • Fax: (310) 326-3311
sales@pelican.com • www.pelican.com

Document created on 07-17-24